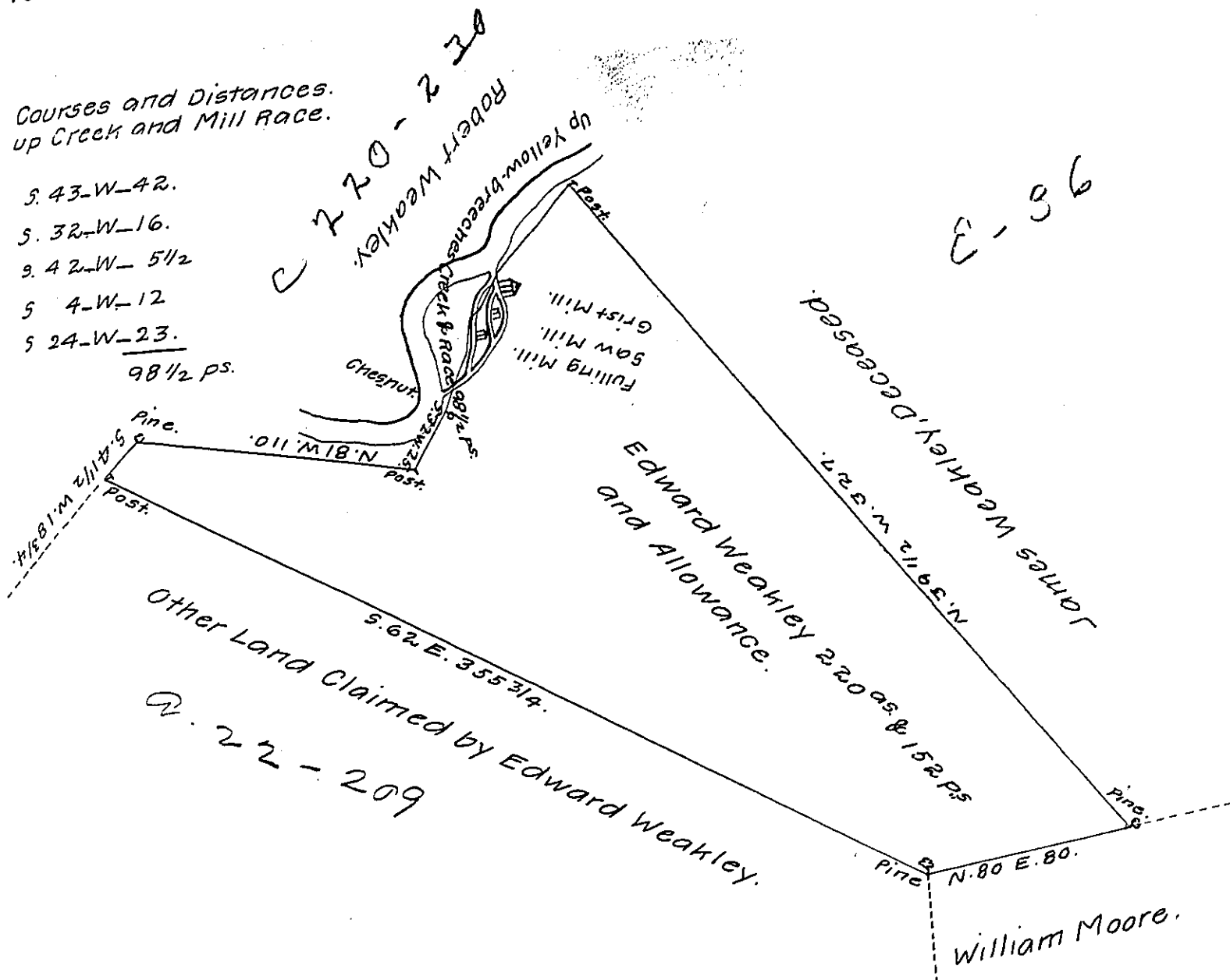


FORM NO 1.

Courses and Distances.
up Creek and Mill Race.

- S. 43-W-42.
 - S. 32-W-16.
 - S. 42-W-5 1/2
 - S 4-W-12
 - S 24-W-23.
- 98 1/2 ps.



The Draught of a Tract of Land Situate in West Pennsborough Township Cumberland County Containing Two Hundred and Twenty Acres and 152 Perches and Allowance of Six & Cent for Roads &c. surveyed for Edward Weakley the 13th Day of May 1783 in Pursuance of the Honourable the Proprietaries Warrant bearing Date the 25th. Day of October 1774.

Dr. Saml. Lyon, D.S.

To John Lukens, Esqr, }
Surveyor General. }

N^o 279.

IN TESTIMONY that the above is a copy of the original remaining on file in the Department of Internal Affairs of Pennsylvania, made conformably to an Act of Assembly approved the 16th day of February, 1833, I have hereunto set my Hand and caused the Seal of said Department to be affixed at Harrisburg, this twenty fourth day of May, 1907.

Henry Howell
Secretary of Internal Affairs.